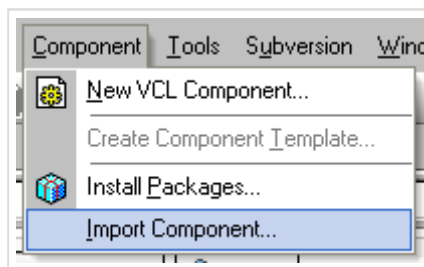


Delphi and stuff

OCCASIONAL BABBLE MOSTLY RELATED TO BORLAND DELPHI

FRIDAY, DECEMBER 22, 2006

The missing Import Component Wizard in Turbo Delphi (Win32)



Apparently the Import Component and View Type Library wizards are not enabled in Turbo Delphi (Win32) by default.

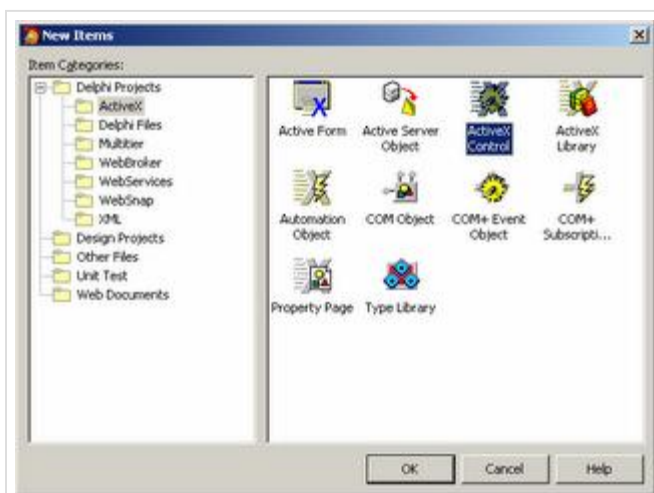
A [workaround](#) has been posted on the newsgroups:

```
Create an empty file named: ATLBASE.H in this directory: $(BDS)
\include\atl\
```

POSTED BY TONDREJ AT 11:48 AM | [COMMENT \(0\)](#) | [TRACKBACK \(0\)](#)

MONDAY, DECEMBER 18, 2006

The missing ActiveX Control Wizard



PREVIOUS POSTS

[The missing Import Component Wizard in Turbo Delph...](#)

[The missing ActiveX Control Wizard Don't mistake SyncEdit for Refactoring ;-\)](#)

[The 2006 Delphi Survey](#)

[New default timeouts in IE7 wininet CodeGear](#)

[delphisvn for Delphi 7](#)

[delphisvn: updated to Subversion 1.4.0](#)

[Delphi Wiki](#)

[Shenoy's PInvoke Live Template](#)

ARCHIVES

[May 2004](#)

[June 2004](#)

[July 2004](#)

[August 2004](#)

[September 2004](#)

[October 2004](#)

[November 2004](#)

[February 2005](#)

[August 2005](#)

[September 2005](#)

[December 2005](#)

[January 2006](#)

[February 2006](#)

[March 2006](#)

[April 2006](#)

[June 2006](#)

[July 2006](#)

The ActiveX Control Wizard is missing in Delphi 2006 by default. You can bring it back by adding the following string value in the registry:

```
[HKEY_CURRENT_USER\Software\Borland\BDS\4.0\Type
Library]
"ActiveXWizard"="True"
```

I've just found it in a comment to [QC25012](#).

Also see [Delphi 2006 Hidden COM Registry Entries](#).

[Regmon](#) reveals another missing registry entry, "InteropCheck"="True", also mentioned [here](#).

POSTED BY TONDREJ AT 7:59 PM COMMENT (0) | TRACKBACK (0)

FRIDAY, DECEMBER 08, 2006

Don't mistake SyncEdit for Refactoring ;-)

Don't mistake [Delphi's SyncEdit](#) for Refactoring. (In case you wonder what SyncEdit is, it's invoked by pressing Ctrl+Shift+J on a selected text in the editor. Works in Delphi 2005 and higher.)

By doing so I've just introduced a rather obscure bug in my code which took me a while to recognize. ;-)
When using SyncEdit, be aware that you're simply doing a search/replace within the selected block of code.

The help says:

Sync Edit determines identical identifiers by matching text strings; it does not analyze the identifiers. For example, it does not distinguish between two like-named identifiers of different types in different scopes. Therefore, Sync Edit is intended for small sections of code, such as a single method or a page of text. For changing larger sections of code, consider using refactoring.

There's also a nice [article](#) by [Bob Swart](#) about SyncEdit, Refactoring and more.

POSTED BY TONDREJ AT 2:41 PM COMMENT (0) | TRACKBACK (0)

FRIDAY, DECEMBER 01, 2006

The 2006 Delphi Survey

Here's your chance to let [CodeGear](#) know what you would like to see in future versions of [Delphi](#):

- | [English version](#) (direct link)
- | [BDN article](#) with links to various language versions

POSTED BY TONDREJ AT 4:00 PM COMMENT (0) | TRACKBACK (0)

[September 2006](#)

[November 2006](#)

[December 2006](#)

BDN

[OTA: Visual design of Wizards](#)

[My CodeCentral submissions](#)

BLOG LINKS

[Algorithms for the Masses](#)

[Another Delphi Programming Blog](#)

[Behind the Screen](#)

[Dan Miser](#)

[Delphi Compiler Core](#)

[Falafel Software Flogs](#)

[Fikret's programming blog](#)

[Hallvard's Blog](#)

[Idle Musings of a Delphi Junkie](#)

[Joel on Software](#)

[Nick's Delphi Blog](#)

[The Hacker's Corner](#)

[The Oracle at Delphi](#)

[TeamB Blog Server](#)

ABOUT ME



Tondrej
Munich, DE

I'm just another Delphi
type ;-)

[VIEW MY COMPLETE](#)

PROFILE

[RSS](#)



» [Blogs that link here](#)



NEVER SEND A HUMAN TO DO A MACHINE'S JOB